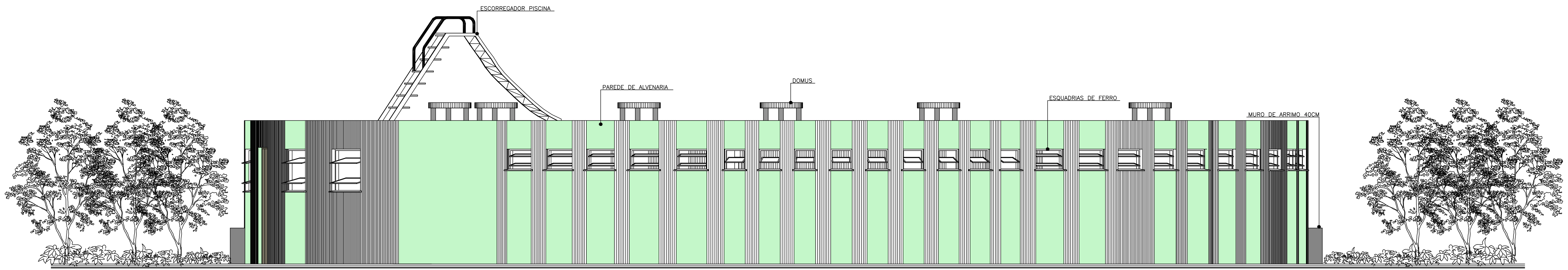
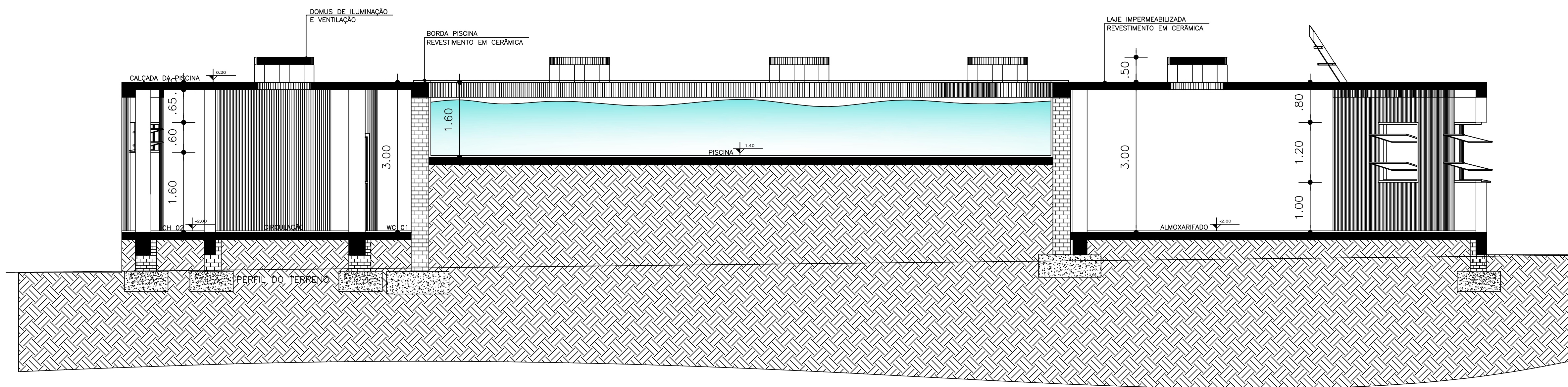


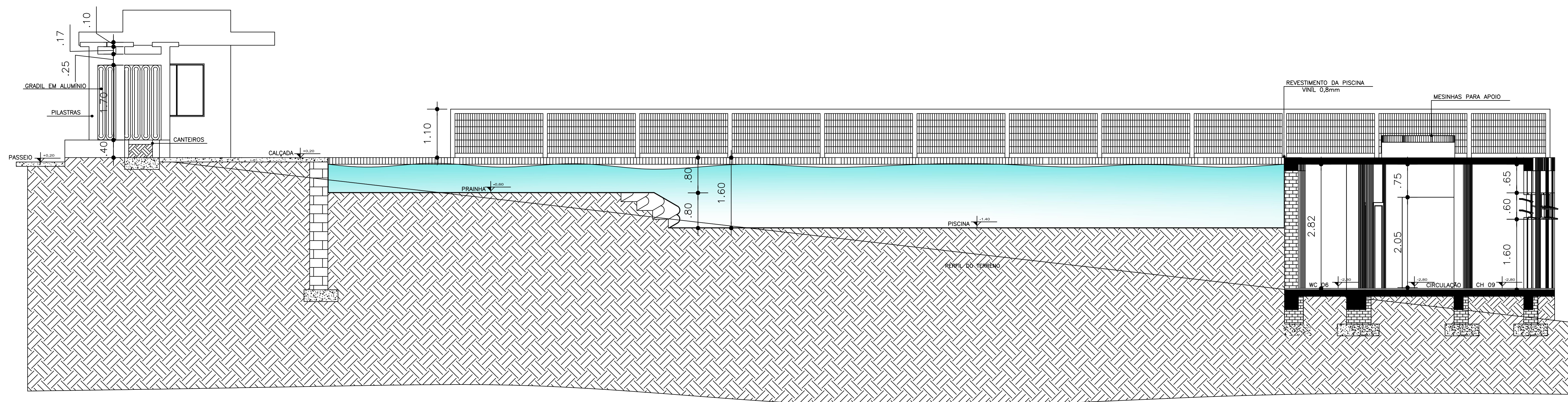
01 FACHADA
ESCALA: 1/50



01 FACHADA DOS FUNDOS
ESCALA: 1/50



01 CORTE A-A'
ESCALA: 1/50



01 CORTE B-B'
ESCALA: 1/50

RUA VALZUMIRO DUTRA, 161-CENTRO-CEP 98.460-000
FONE (55) 3745-1288 - IRAÍ/RS

| | | | |
|-----------------------------------|-----------|---------------------|------------|
| MUNICIPIO DE | | IRAÍ | |
| PROJETO ARQUITETÔNICO | | | |
| REFORMA PISCINA EXTERNA | PRANCHAS: | 02 | DATA: |
| COMPLEXO TURÍSTICO OSVALDO CRUZ | ESCALA: | 1:50 | MET. TOTAL |
| CRISTIAN NEGRELLO | | VOLMIR JOSÉ BELLEKI | |
| CONDOMÍNIO SIA - CREA 14.183/0007 | | PRÉDIO 3000000 | |