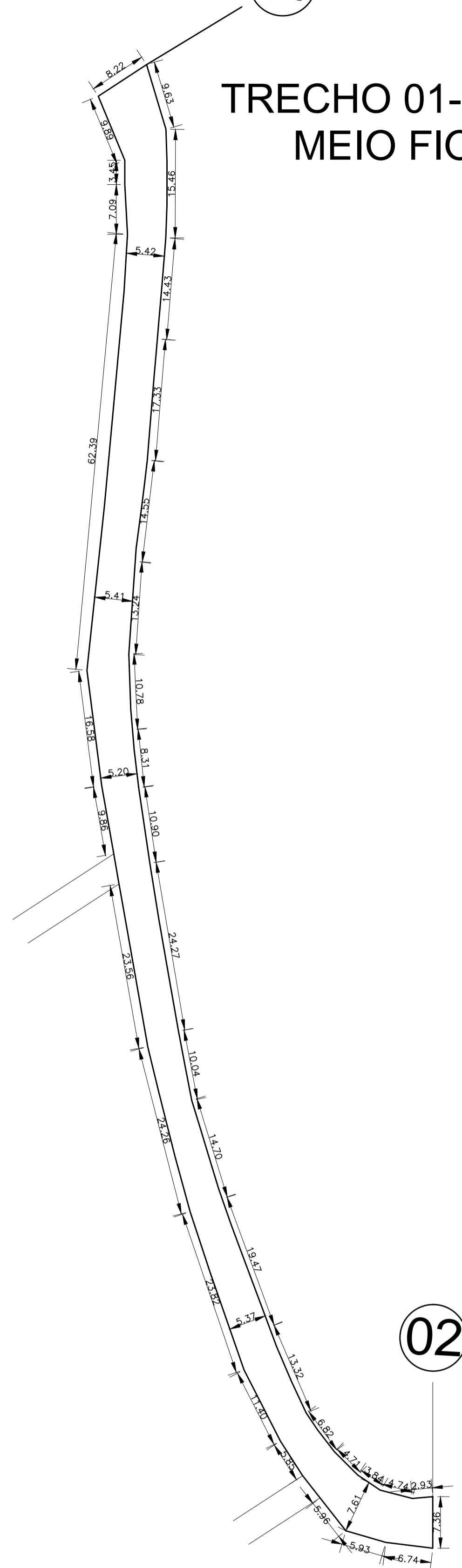


TRECHO A

01

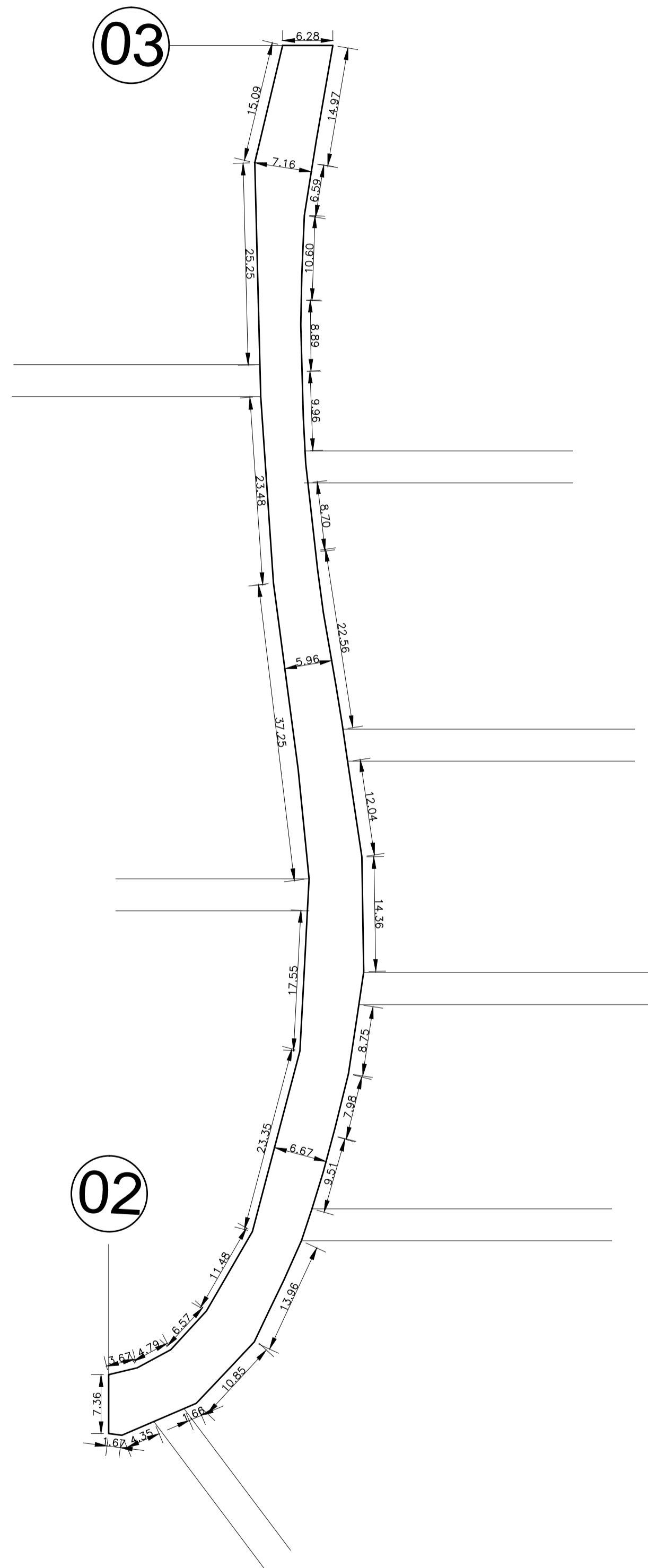
TRECHO 01-02: 1.199,54M²
MEIO FIO:436,28M



02

TRECHO 02-03: 1.145,48M²
MEIO FIO:335,88M

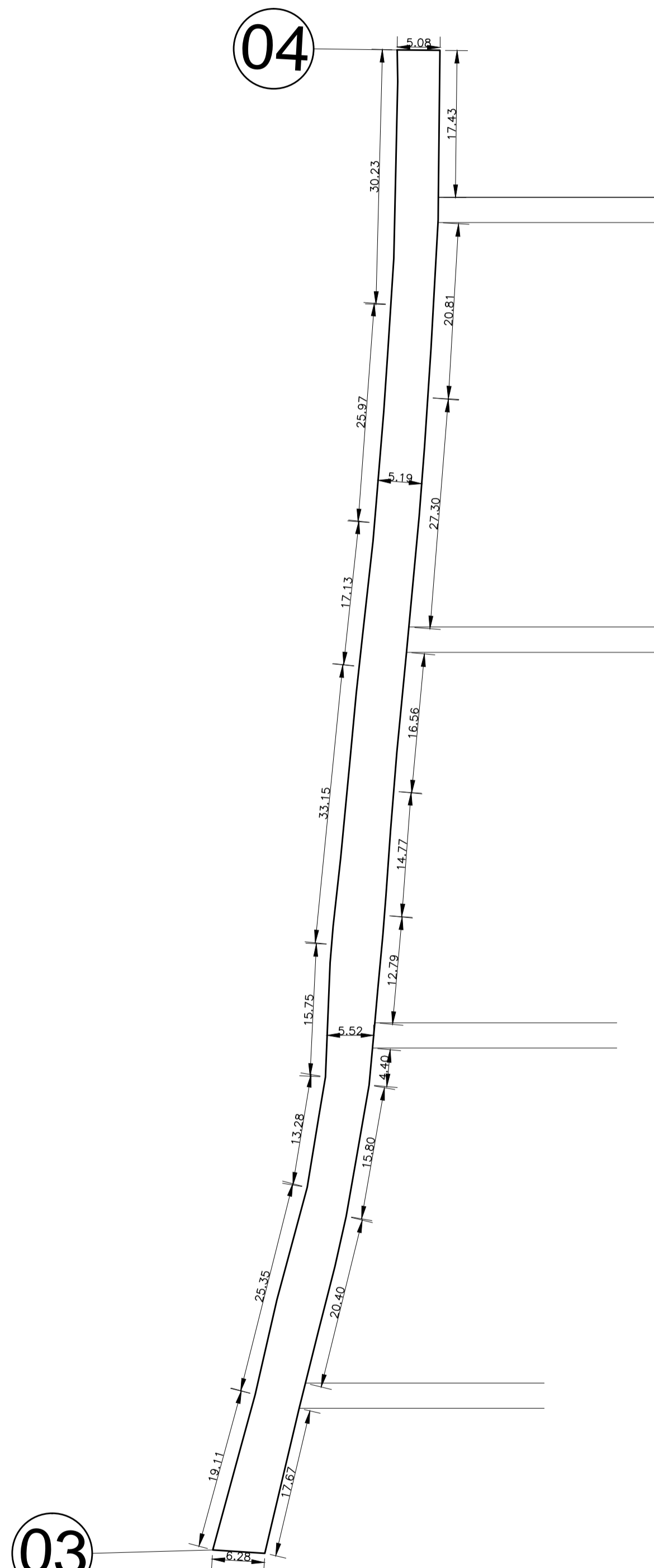
03



02

TRECHO 03-04: 970,35M²
MEIO FIO:347,97M

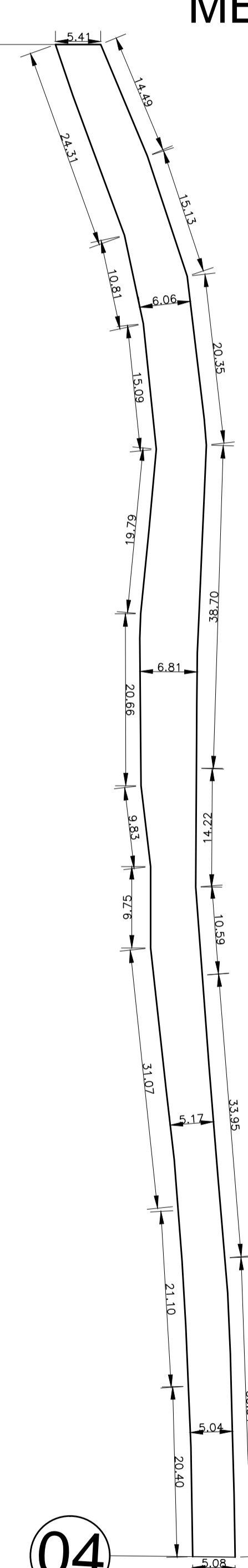
04



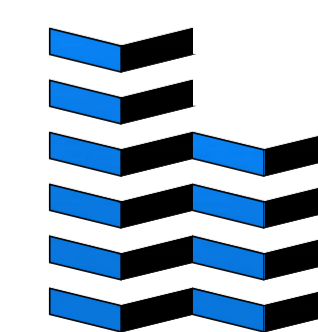
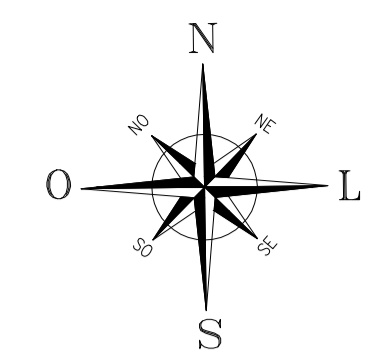
03

TRECHO 04-05: 1.052,34M²
MEIO FIO:366,08M

05



04



PLANTA_BAIXA
ÁREA:4.367,71M²
ESCALA:1:500

PAVIMENTAÇÃO A SER EXECUTADA

RUA VALZUMIRO DUTRA,161-CENTRO-CEP 98.460-000
FONE (55) 3745-1288 - IRAÍ/RS

MUNICIPIO DE		IRAÍ	
PLANTA BAIXA			
TRECHO A - PONTE PRETA ATÉ RS 324	PRANCHA: A-03	DATA: 01/04/2015	
CALÇAMENTO COM PEDRAS IRREGULARES	ESCALA: 1:500	MET. TOTAL: 18.925,18M ²	

VINICIUS ZANCAN BONAFE
ENGENHEIRO CIVIL - RUA 47 - 1527-25

VOLMIR JOSÉ BIELSKI
PROFESSOR MUNICIPAL

Direitos Autorais Reservados Conforme Artigo 184 Do Código Penal, Lei 5.988 Do Código Civil e Resolução CONTEA 205/71